

VO 706.046 AK HCI Selected Topics of HCI: Intelligent User Interfaces

Summer Term 2018

Mobile Silico Lab

Tutors: a.holzinger@hci-kdd.org,
m.plass@hci-kdd.org
robert.reihs@medunigraz.at
heimo.mueller@medunigraz.at

<https://hci-kdd.org/iui-explainable-ai/>



- Slide diagnosed thru microscope
- Experience based decision
 - Relatively little amount of rules
 - Long way to become a good pathologist
- Learning by watching other pathologists

- Extract information
 - What is important?
 - Why is that important?
 - Why should we take a detailed view on this part of the slide?
- Improve the methods how to teach new pathologists
- Get information for intelligent supporting systems
- Harvest information for automated diagnosis

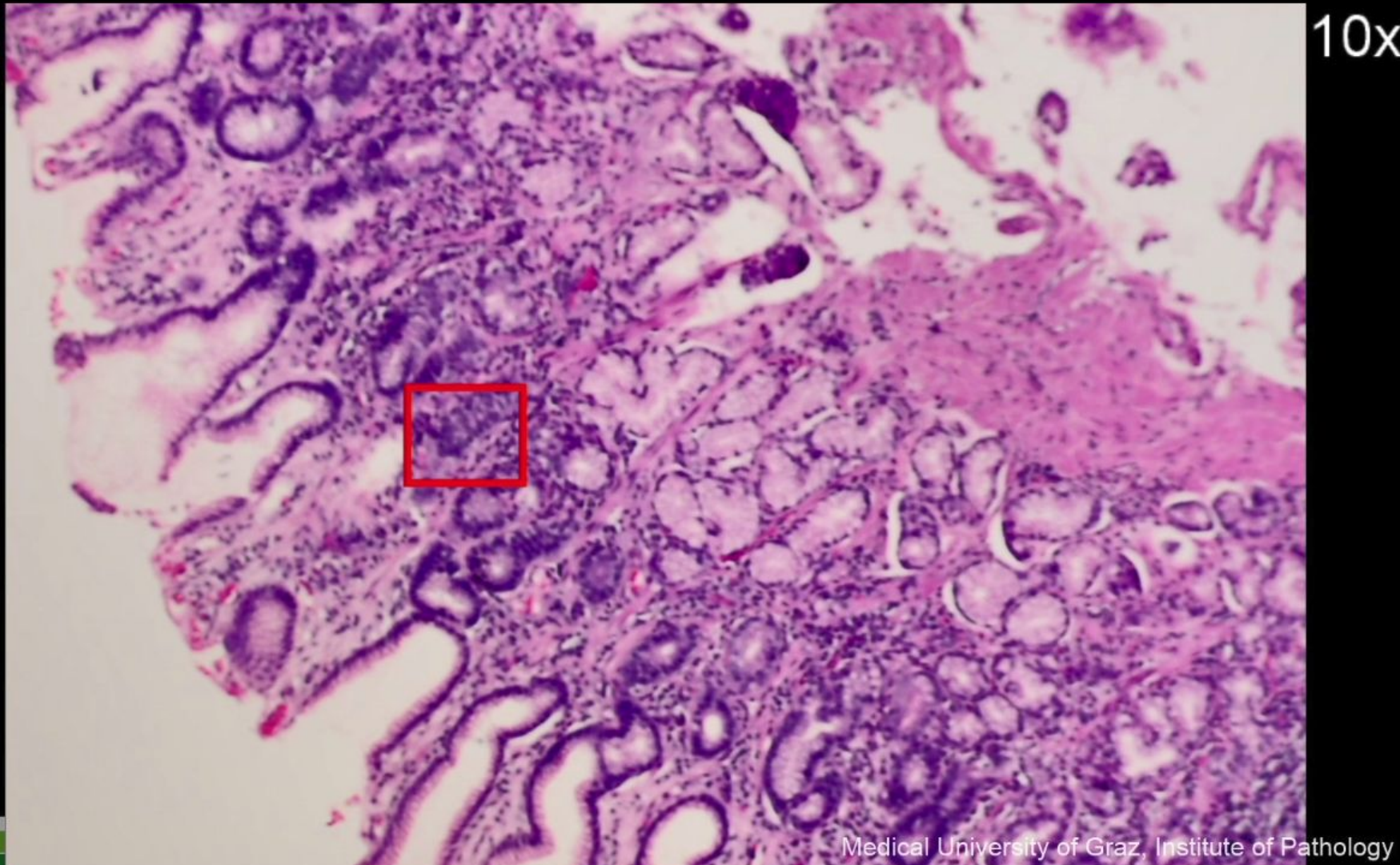
Video Demo

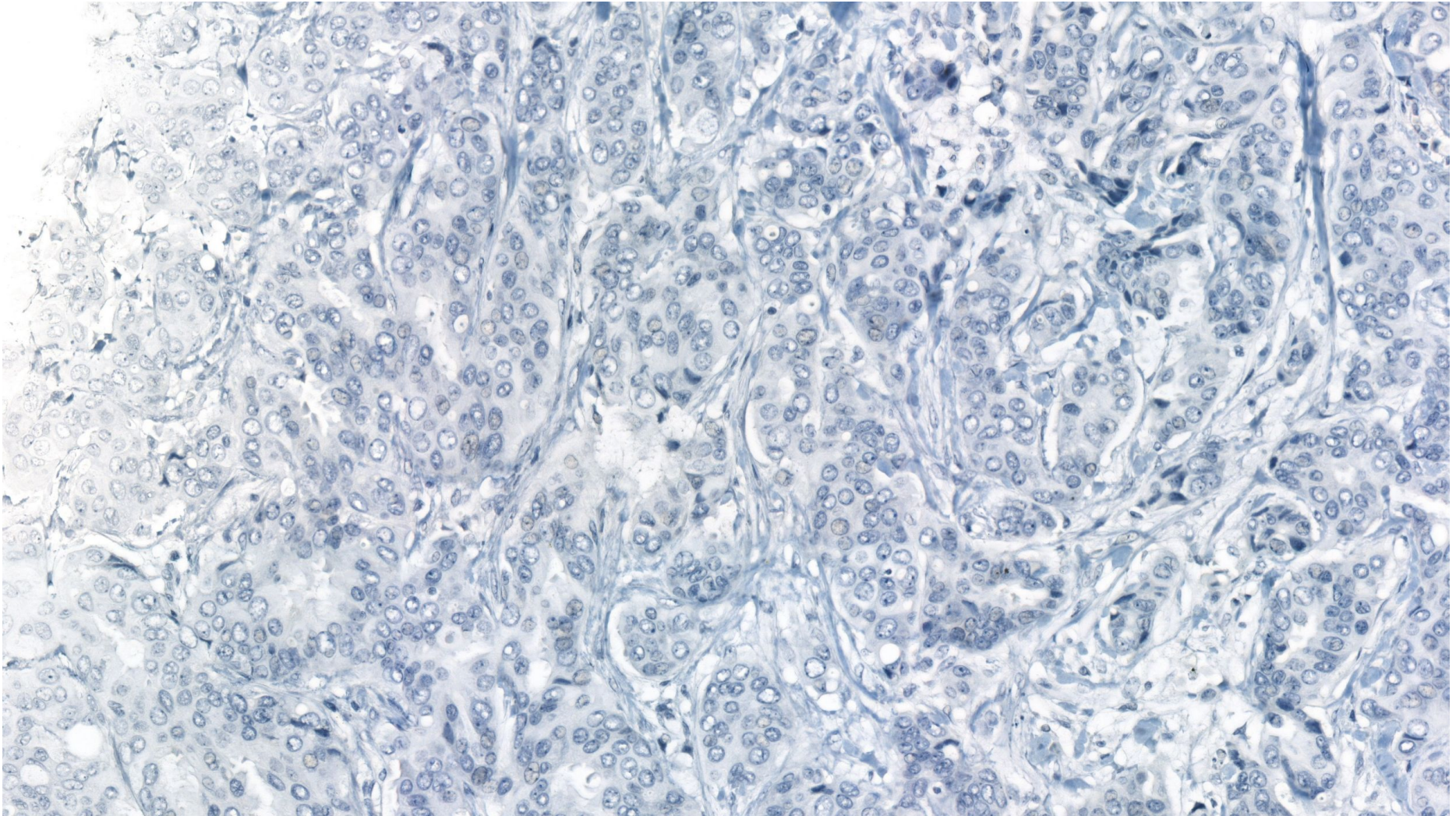


Video Demo



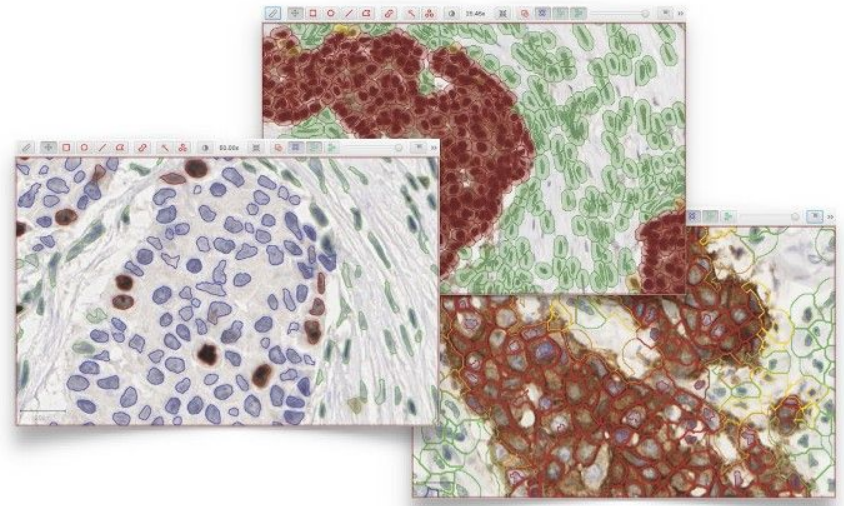
Video Demo





- QuPath interface
- Digital Patient
- Microscope tracking and WSI generation
- Player and recorder for OpenSlide viewer

- Interface/API for QuPath
 - Extract nucleus from WSI/Images QuPath
 - Export of nucleus
 - Integration in OpenSlideViewer
 - Group of 3 students



- GUI for Pathologist
 - Display of Medical evidence
 - Display of WSI
 - Display of histological evidence
 - Group of 3 students

- Video to slide-image mapping
 - Find positions in the WSI from the video
 - Frame extraction from the Video
 - Position finding on the WSI
 - Where is the where is the current frame in the WSI?
 - Storage of the extracted information
 - Group of 3 students

- Visualisation of the Video in the WSI with OpenSlideViewer
- Path marking on the WSI
 - Draw a route thru the WSI
 - Different layers (pyramidal picture)
- Projection in different layers
- Rebuilt the Video with pictures from the WSI
- Group of 3 students

